

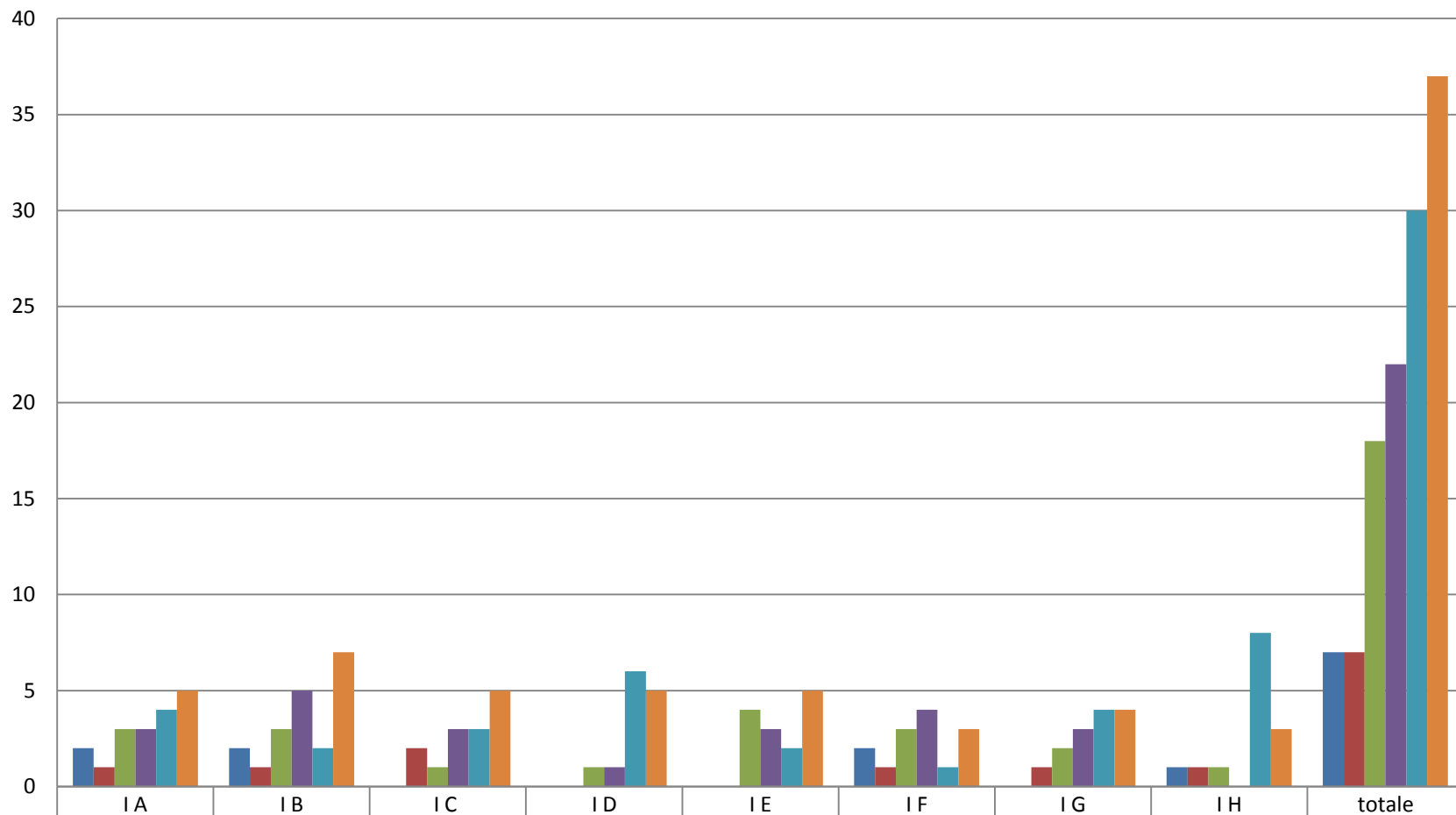
Piano di Miglioramento 2012-2013

Esiti prove finali

Italiano – prova Cornoldi

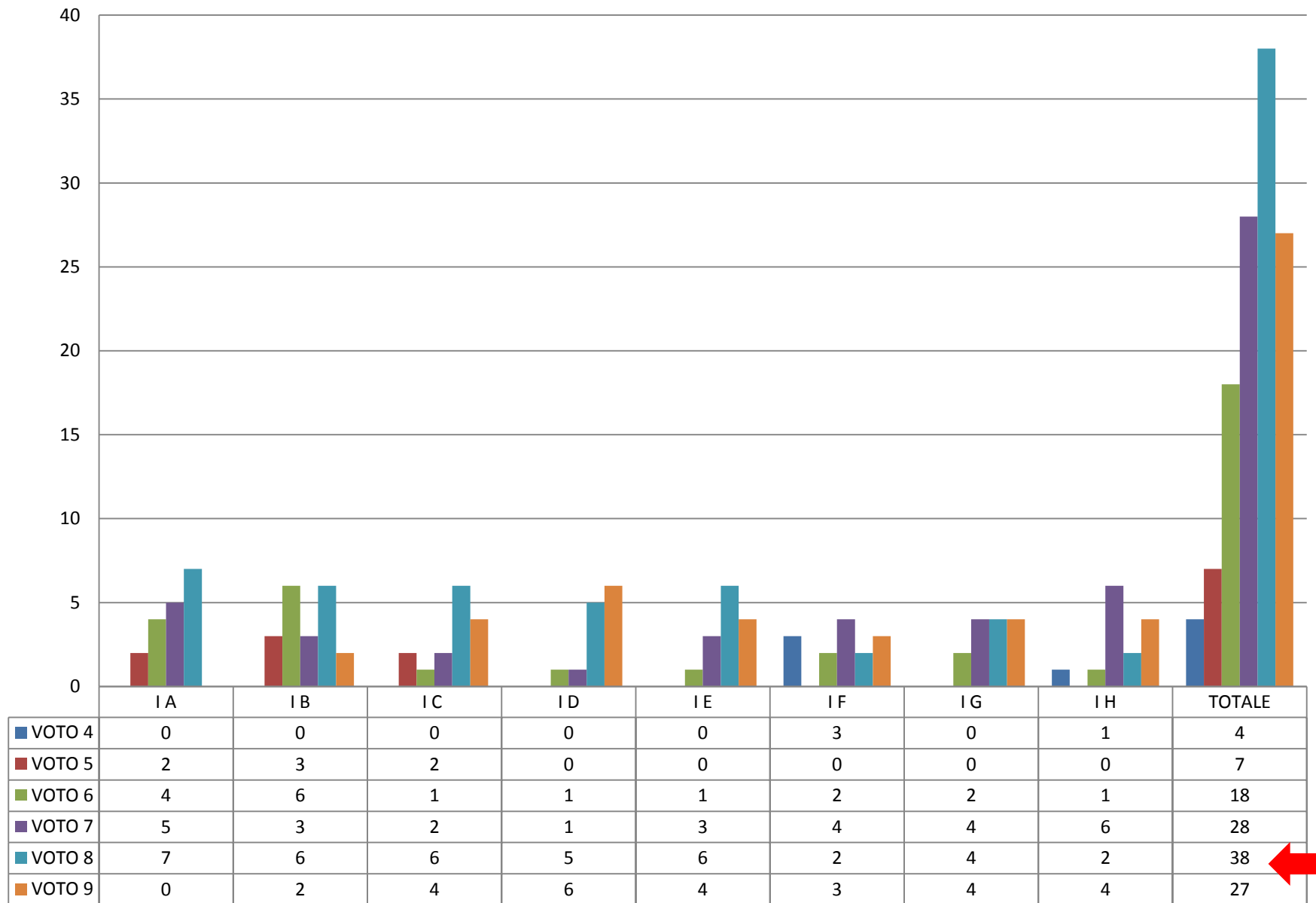
Matematica – prova Giunti

Classi I – prova Italiano

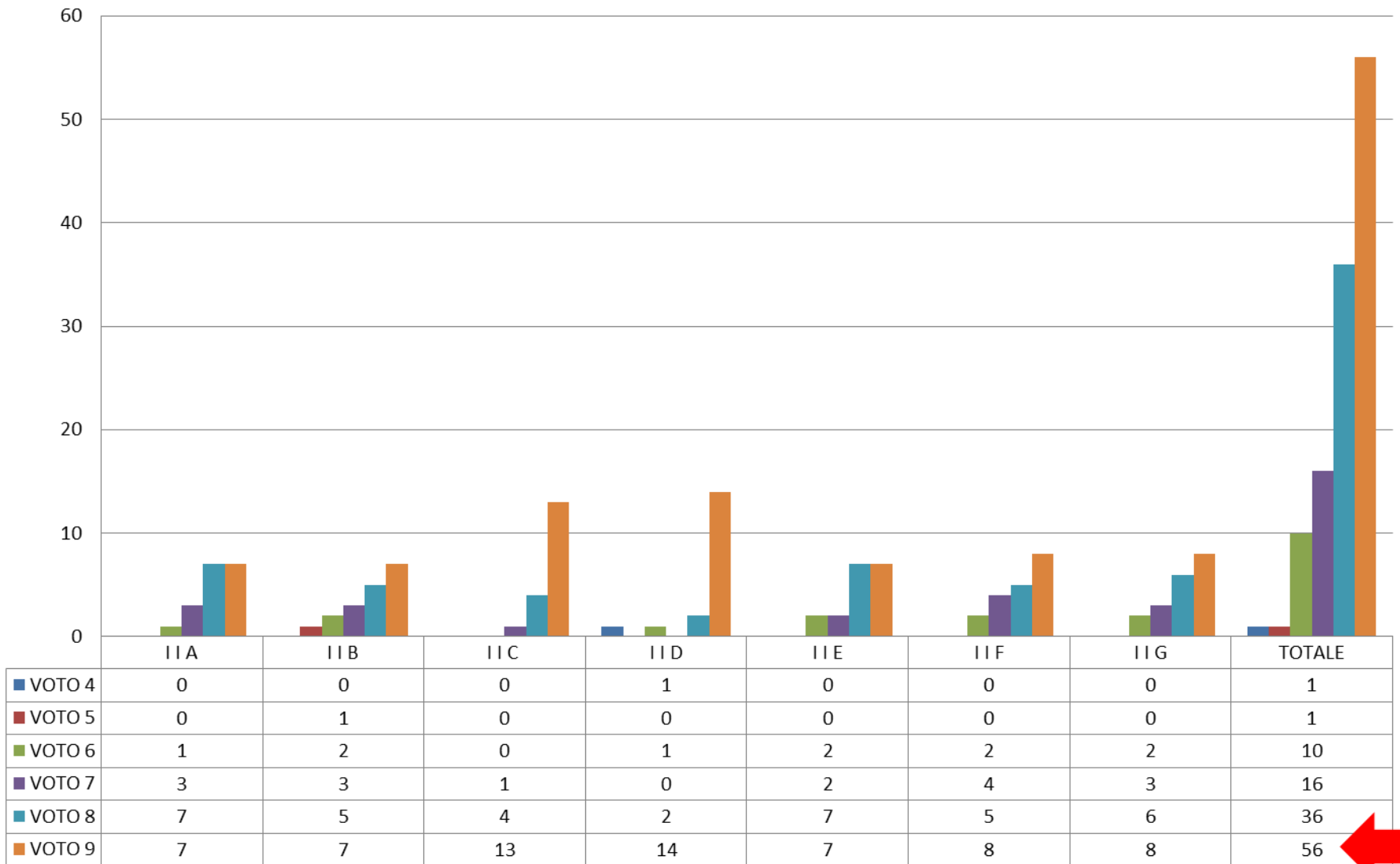


VOTO 4	2	2	0	0	0	2	0	1	7
VOTO 5	1	1	2	0	0	1	1	1	7
VOTO 6	3	3	1	1	4	3	2	1	18
VOTO 7	3	5	3	1	3	4	3	0	22
VOTO 8	4	2	3	6	2	1	4	8	30
VOTO 9	5	7	5	5	5	3	4	3	37

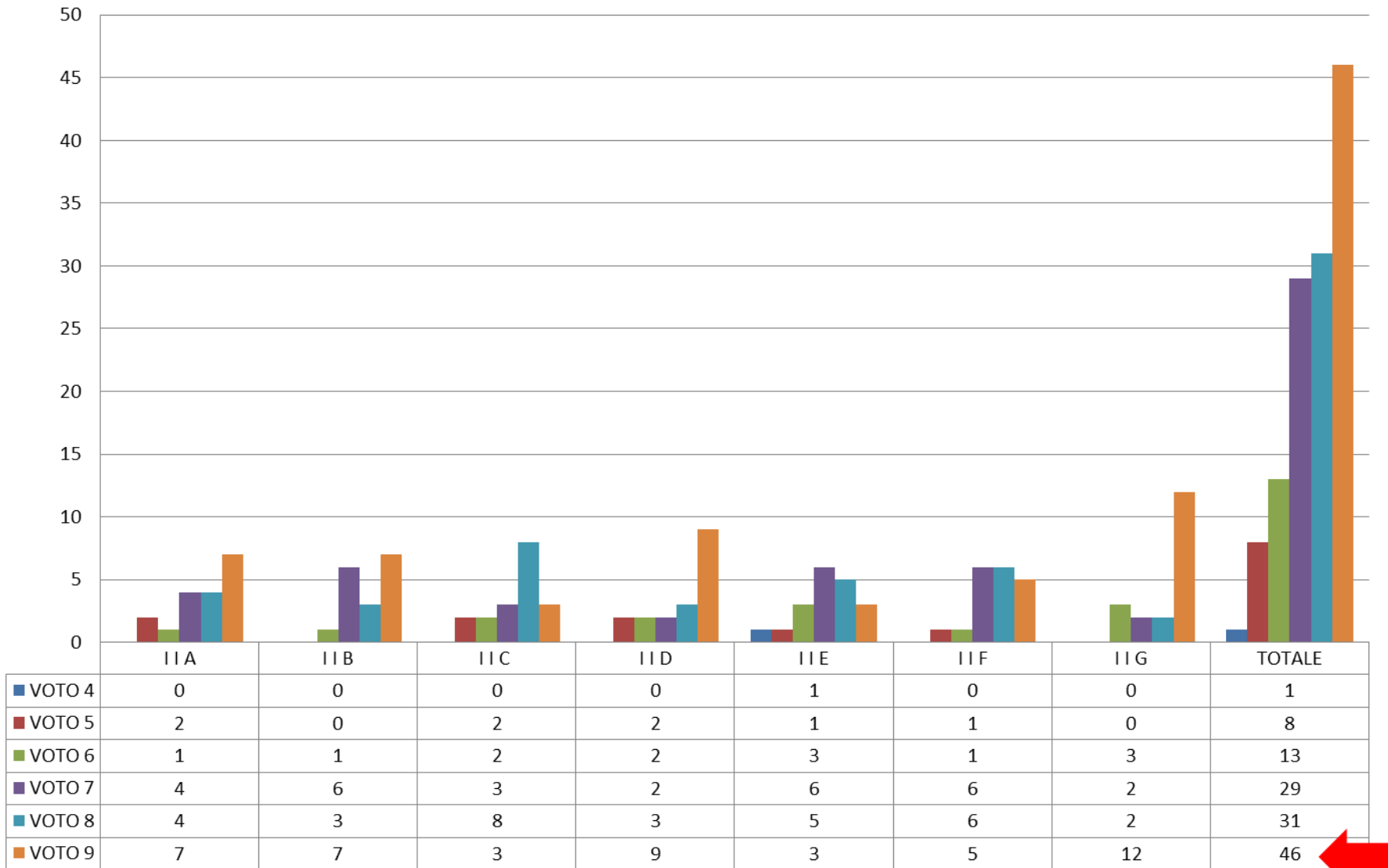
Classi I – prova Matematica



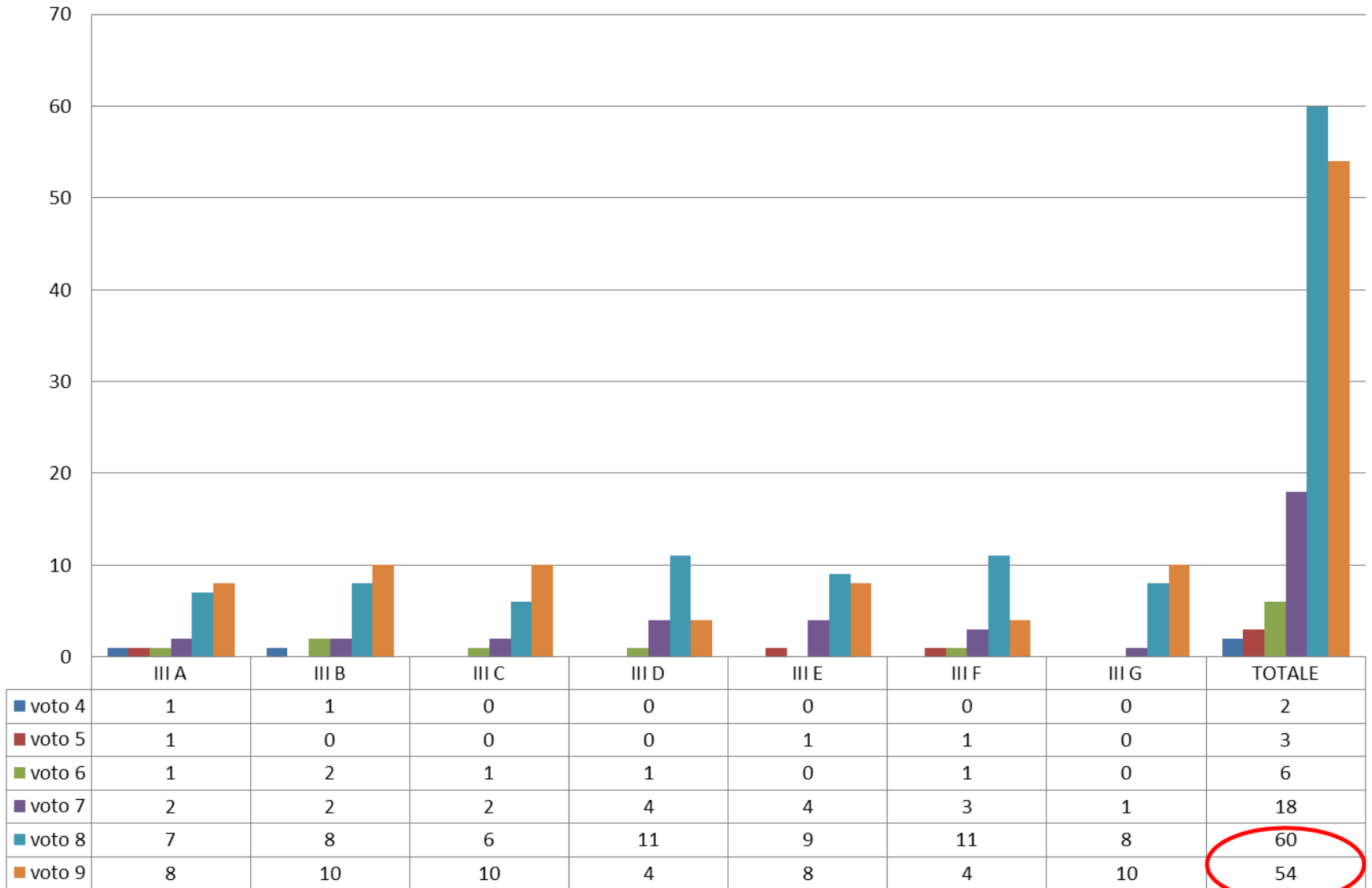
Classi II - prova Italiano



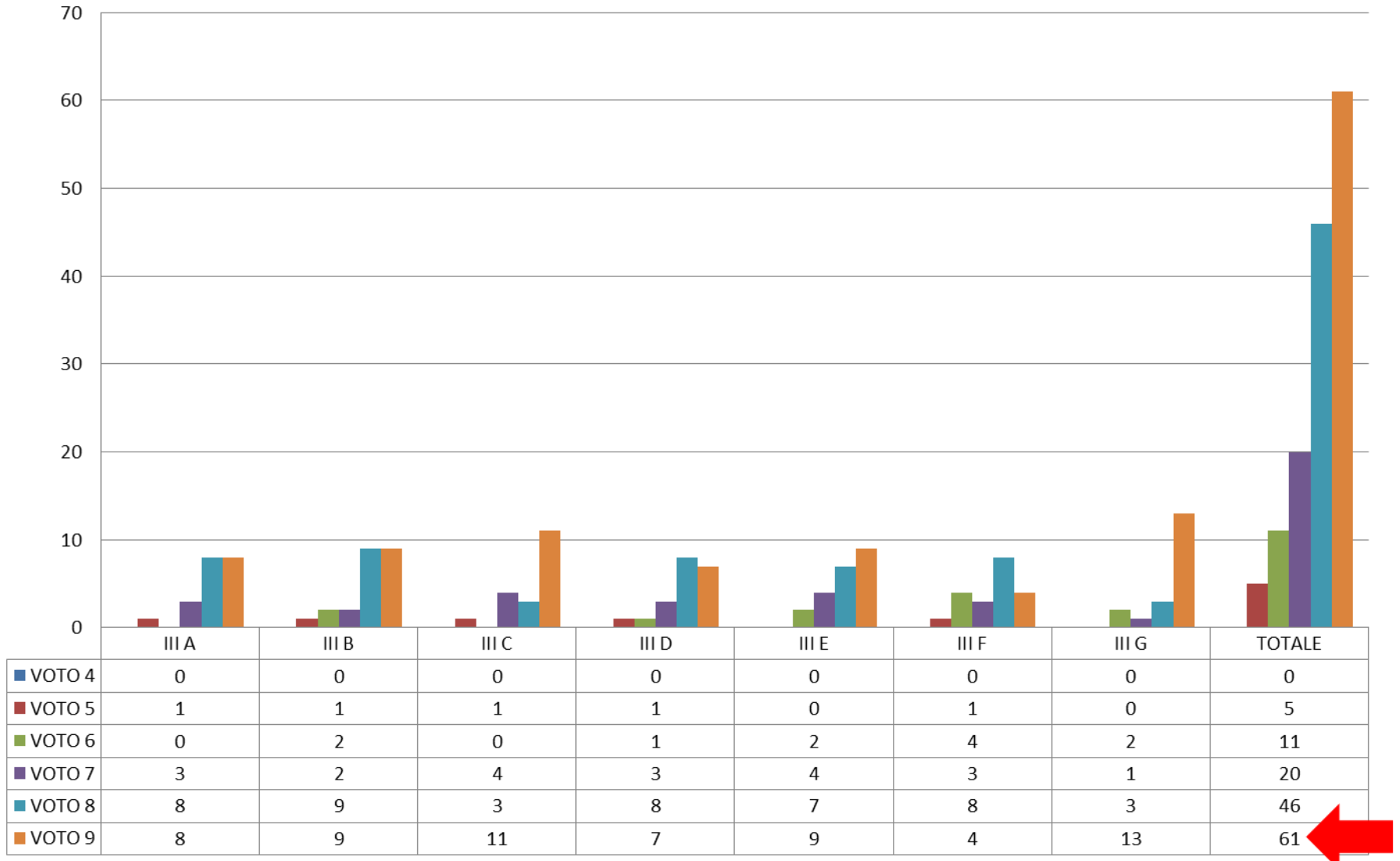
Classi II – prova Matematica



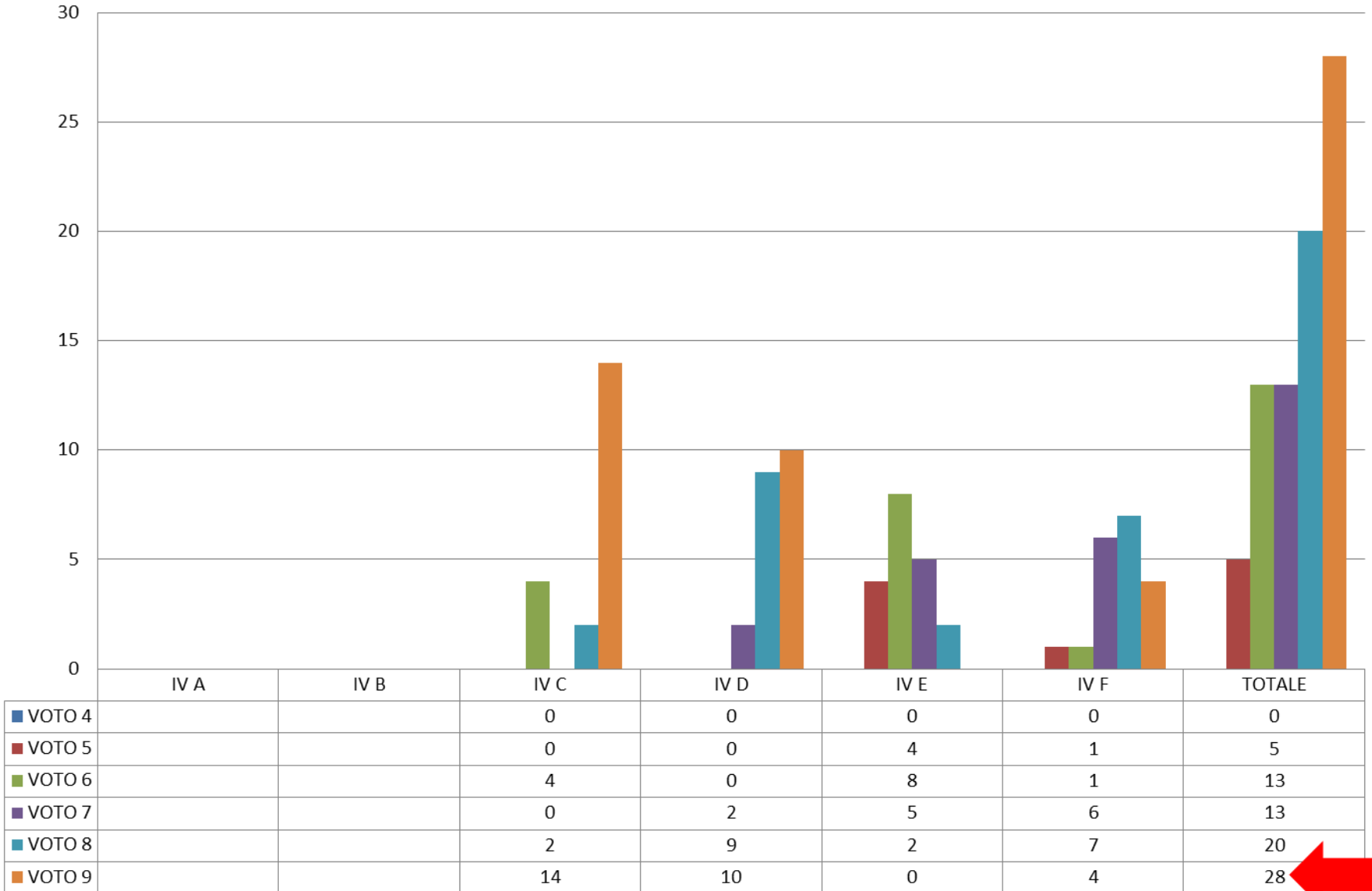
Classi III – prova Italiano



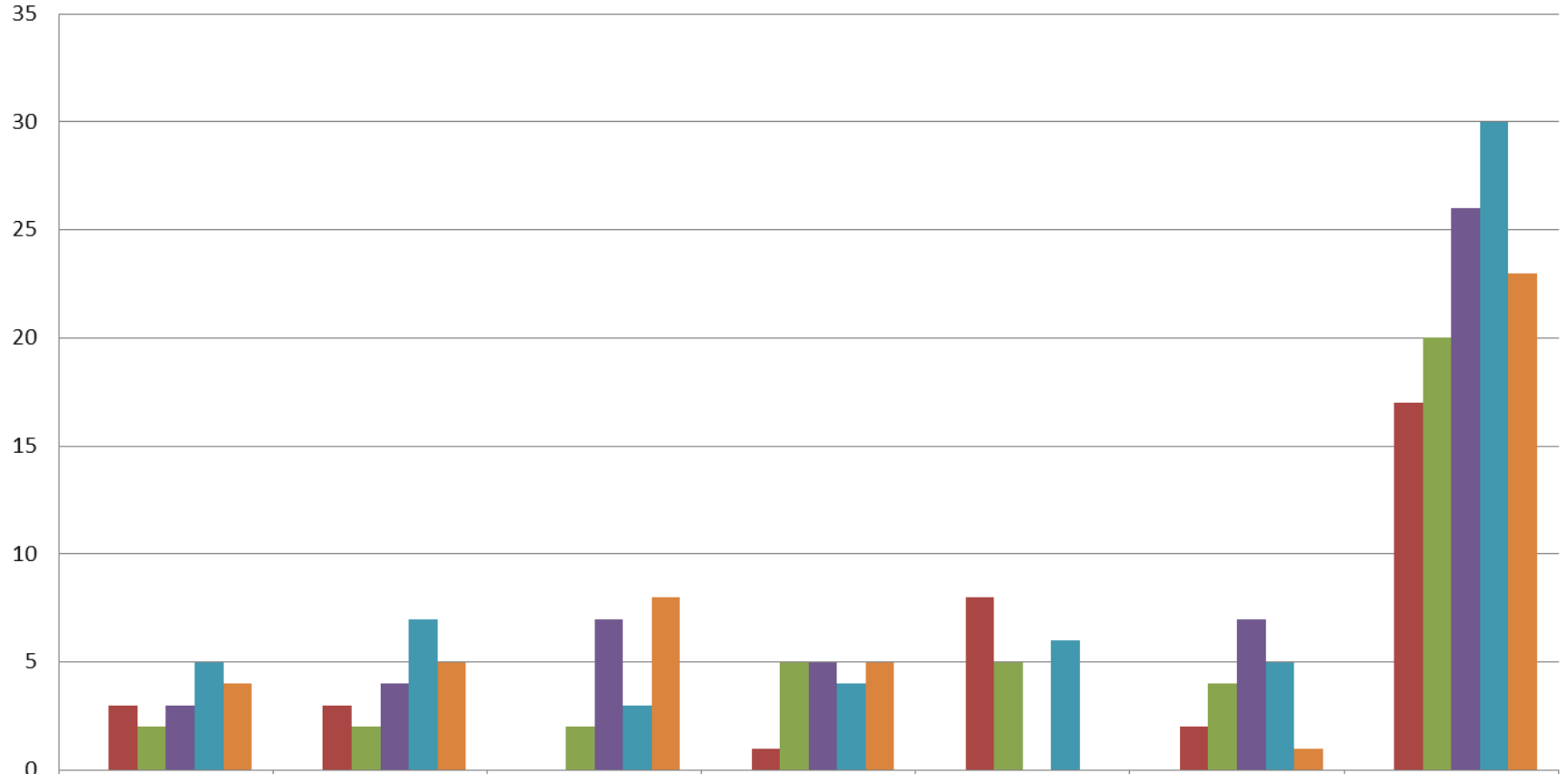
Classi III – prova Matematica



Classi IV – prova Italiano

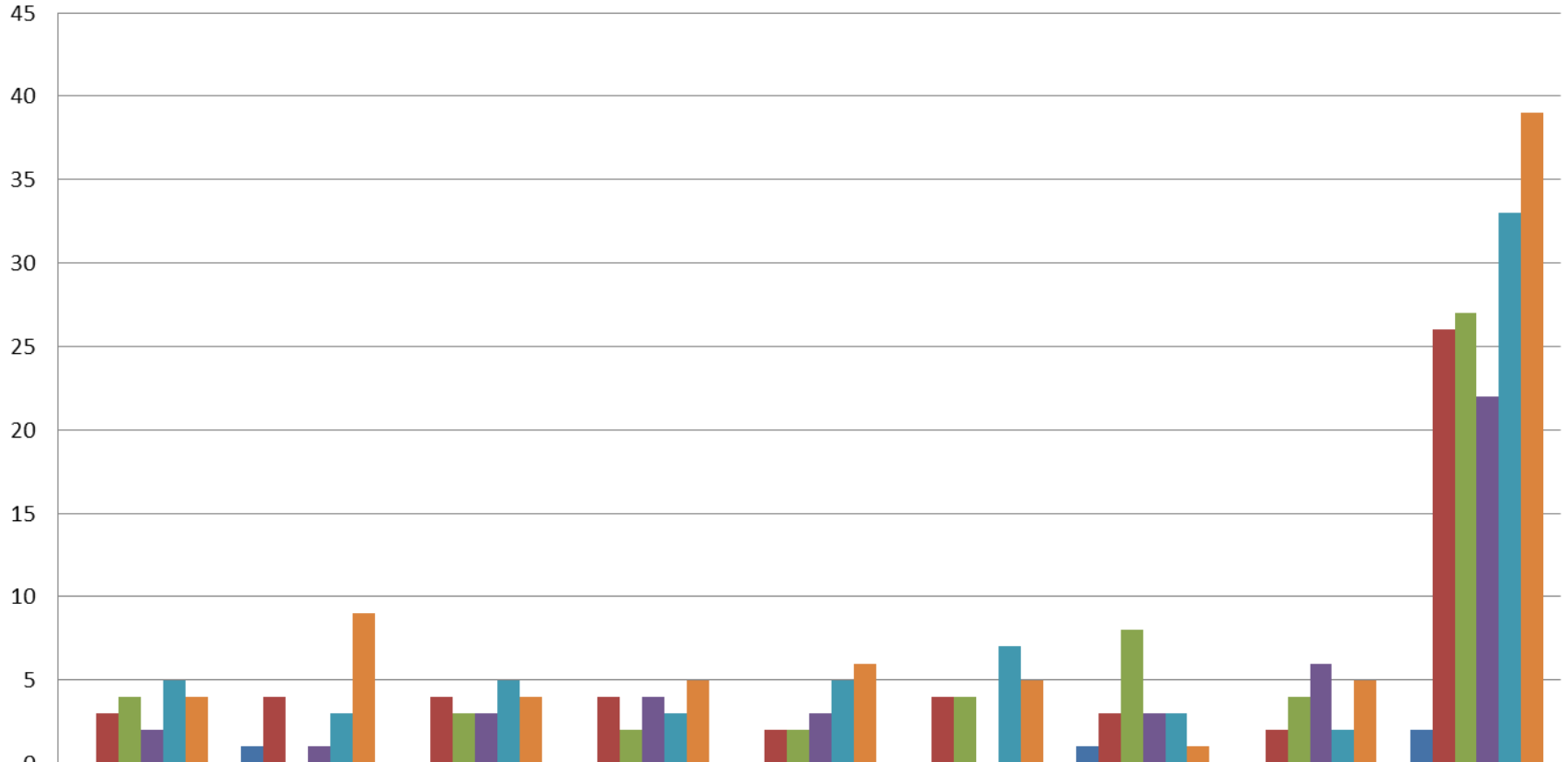


Classi IV – prova Matematica

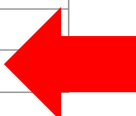


	IV A	IV B	IV C	IV D	IV E	IV F	TOTALE
VOTO 4	0	0	0	0	0	0	0
VOTO 5	3	3	0	1	8	2	17
VOTO 6	2	2	2	5	5	4	20
VOTO 7	3	4	7	5	0	7	26
VOTO 8	5	7	3	4	6	5	30
VOTO 9	4	5	8	5	0	1	23

Classi V – prova Matematica



	VA	VB	VC	VD	VE	VF	VG	VH	TOTALE
VOTO 4	0	1	0	0	0	0	1	0	2
VOTO 5	3	4	4	4	2	4	3	2	26
VOTO 6	4	0	3	2	2	4	8	4	27
VOTO 7	2	1	3	4	3	0	3	6	22
VOTO 8	5	3	5	3	5	7	3	2	33
VOTO 9	4	9	4	5	6	5	1	5	39

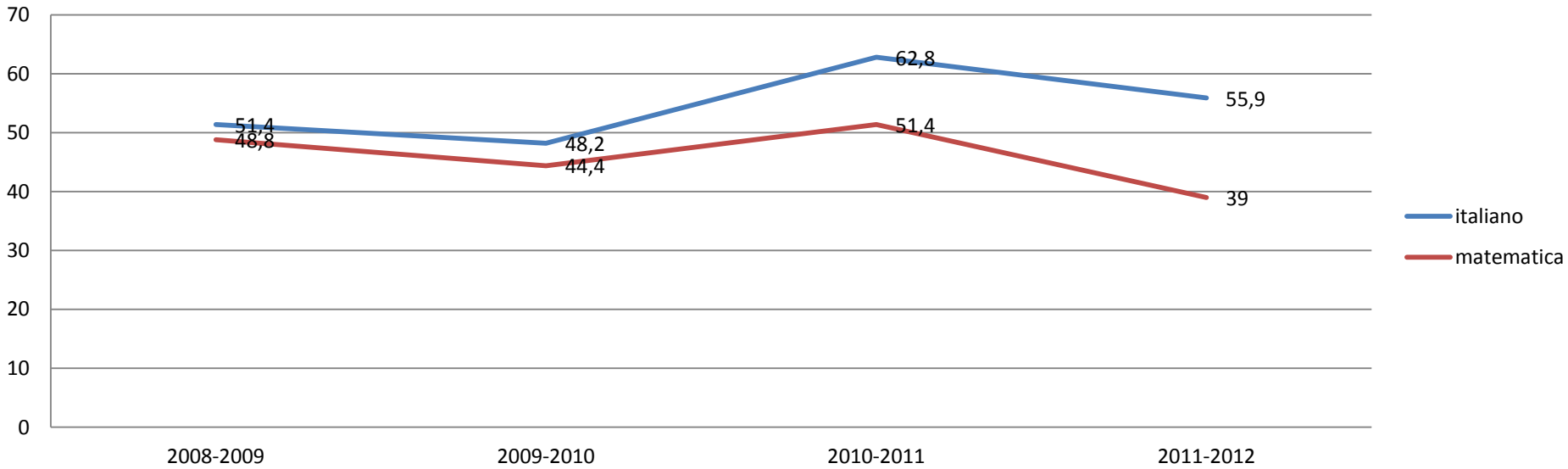


Piano di Miglioramento 2012-2013

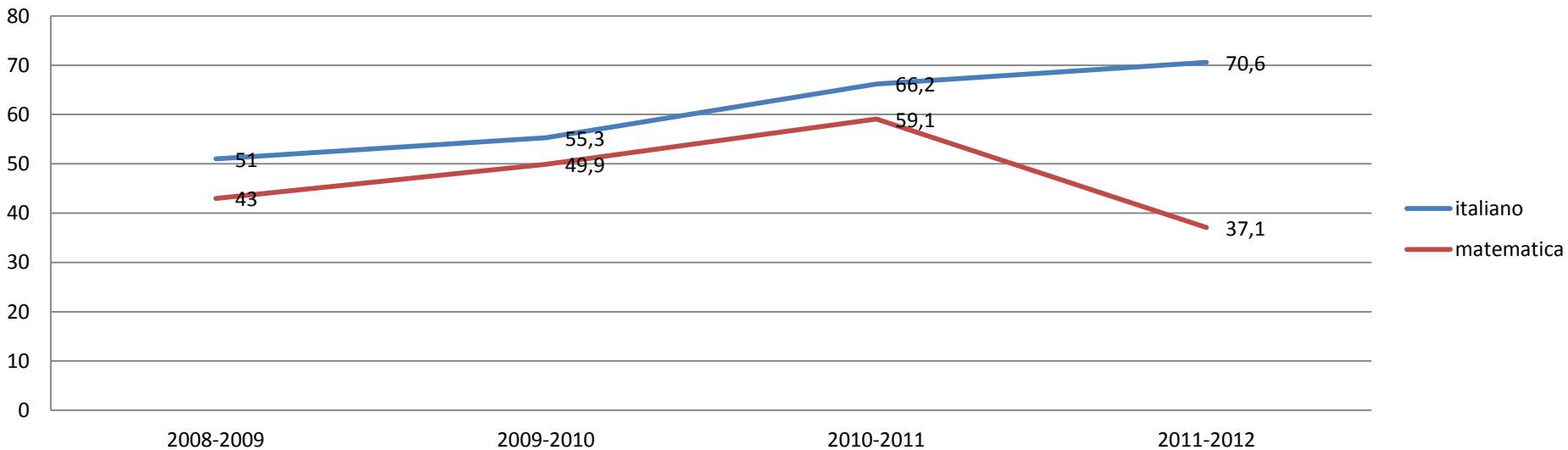
Focus esiti
prove INVALSI

I dati complessivi della scuola negli anni

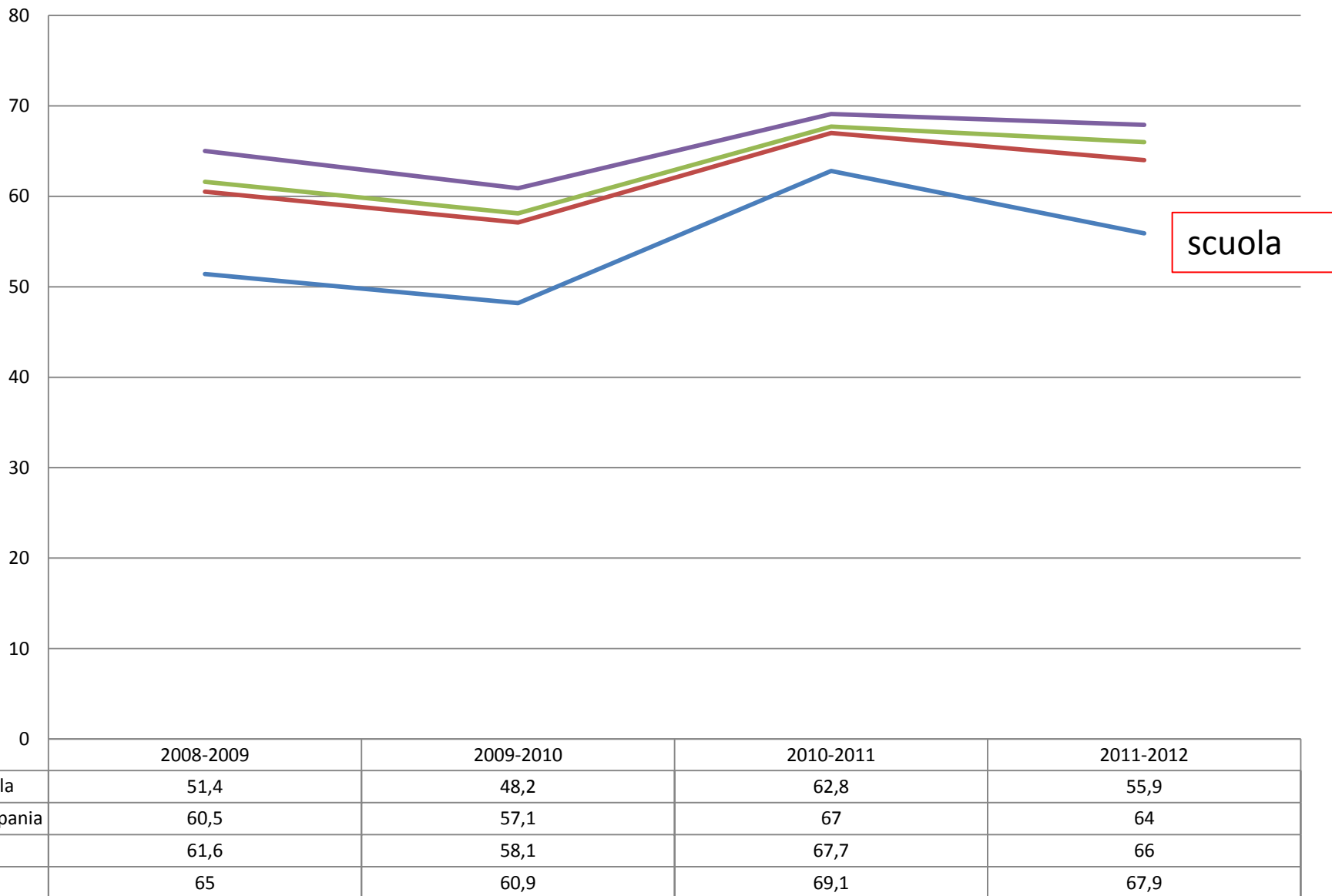
Classi II



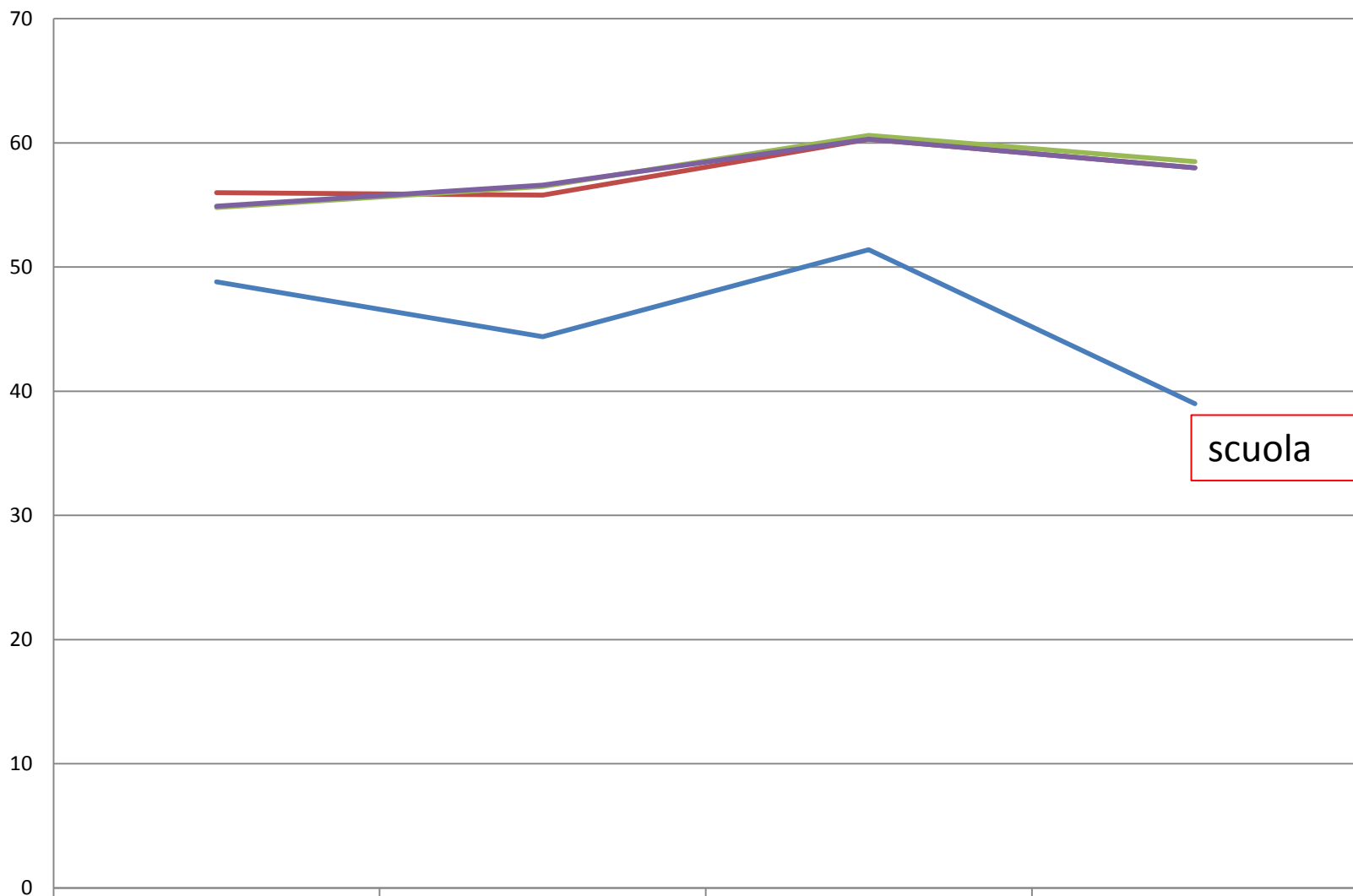
Classi V



Confronto dati classi II - Italiano

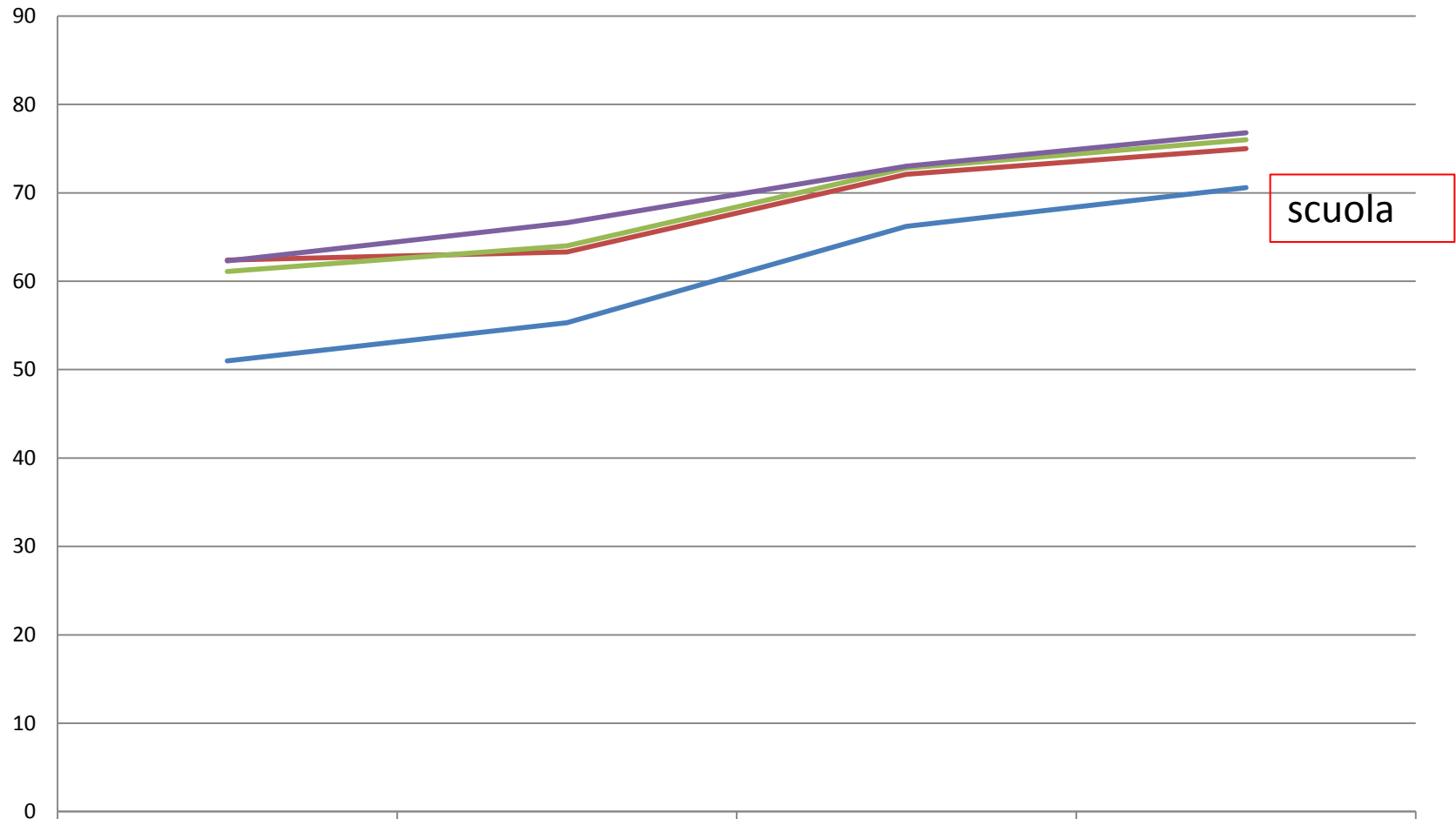


Confronto dati classi II - Matematica



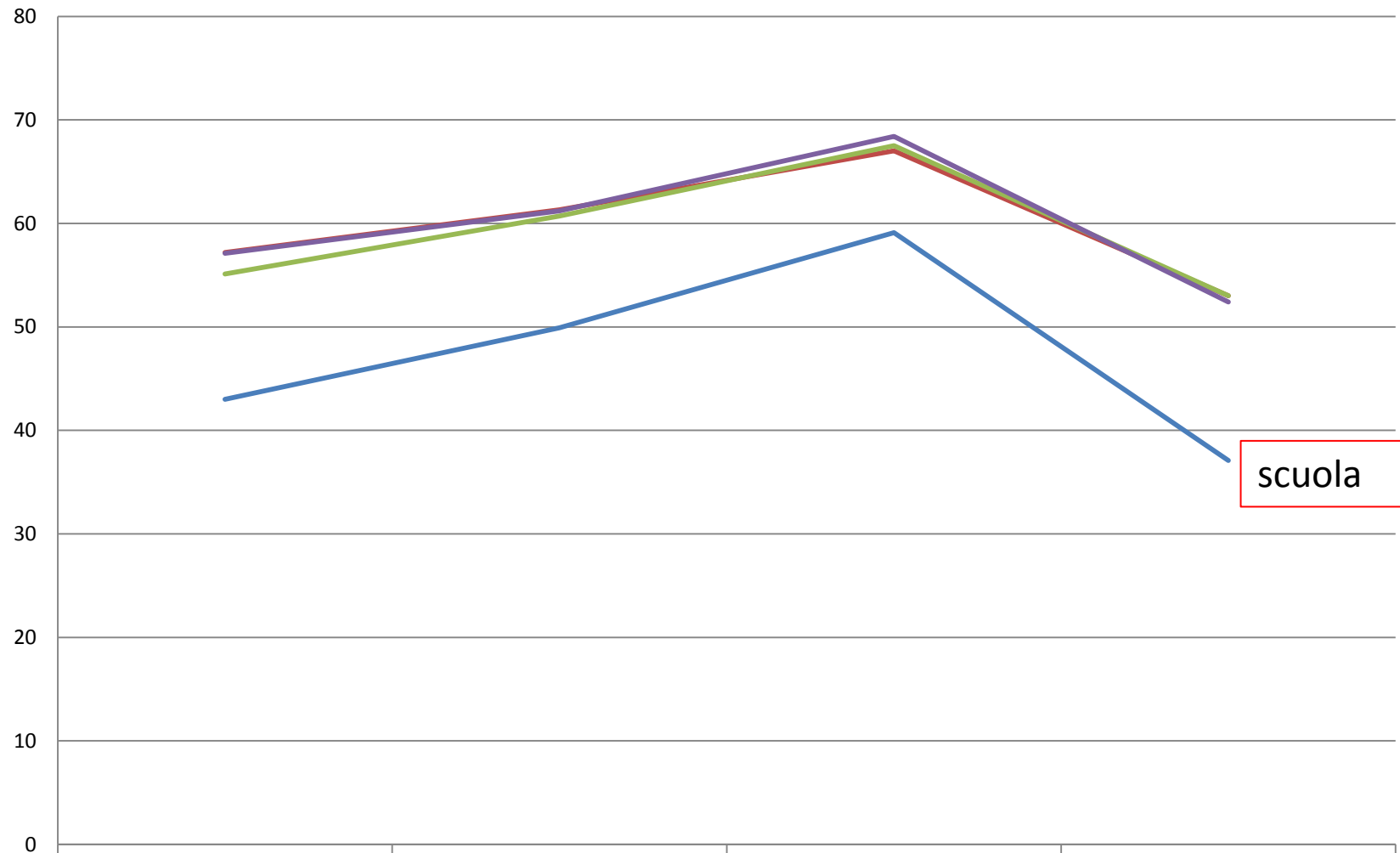
	2008-2009	2009-2010	2010-2011	2011-2012
Scuola	48,8	44,4	51,4	39
Campania	56	55,8	60,3	58
Sud	54,8	56,5	60,6	58,5
Italia	54,9	56,6	60,3	58

Confronto dati classi V - Italiano



	2008-2009	2009-2010	2010-2011	2011-2012
Scuola	51	55,3	66,2	70,6
Campania	62,4	63,3	72,1	75
Sud	61,1	64	72,8	76
Italia	62,3	66,6	73	76,8

Confronto dati classi V - Matematica



Scuola	43	49,9	59,1	37,1
Campania	57,2	61,3	67	53
Sud	55,1	60,7	67,5	53
Italia	57,1	61,2	68,4	52,4